


## Customized Solutions - A great new proposition

At **Sentra** we focus on matching clients with business solutions that speak to their individual needs and preference. While we are able to find off the shelf solutions for many clients, we have found that several operations have very unique requirements that call for customized solutions.

Until very recently, getting an application developed for you was prohibitively expensive and usually riddled with deployment problems and errors.

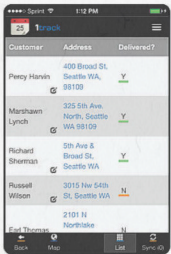
We are now able to develop customized solutions that satisfy industry requirements of security, support and ease of use, while maintaining a very practical pricing regime. We also present the advantage of developing applications that run well on all platforms including mobile devices and web based platforms. Mobile devices are far cheaper to use while they provide mobile connectivity and several useful features.

We build everything from simple productivity tools to complex business process management solutions.



AppSheet

**Get that idea off the ground now  
And start working as you should!**




Your business needs custom mobile apps.

Yet custom apps are expensive!

Hire developers.  
Wait for months.  
Spend \$30,000 or more!

**Sentra makes it easy.**



Customer	Address	Delivered?
Perry Harris	400 Broad St. Seattle WA, 98109	Y
Marshaem Lynch	335 5th Ave North Seattle WA 98109	Y
Richard Sherman	5th Ave & Broad St. Seattle WA	Y
Russell Wilson	3015 New 54th St. Seattle WA	N
Earl Thomas	2101 1st Northlake	N

Our solutions are primarily custom built to serve your unique business environment needs. Our parent platform **Appsheet** has grown to be the leading business mobility solution environment.

Developers all around the world have build more than one million applications on the platform, serving everyone from renewable energy leaders in Africa to Fortune 500 corporations.

## Practical benefits of Your Customized Solution

- ✦ **Can be scaled down** to just serve your current pain point: i.e. cost and complexity can be matched to your present need. You don't pay for what you do not need.
- ✦ **You direct the design process** to ensure that the result is perfectly matched to your need.
- ✦ In addition to the traditional database options, the system can post data to an easy to use spreadsheet that can be accessed and used without the app if need be.
- ✦ **Secure and access your data better**, by making your operations completely paper free. All forms, records etc. are generated by individual users (on the spot wherever they are) from their mobile devices and posted in real time to quickly accessible cloud storage of your choice. Remove the need to aggregate paper records in a central office.
- ✦ **Access all your operational data** with dashboards, charts, tables and detail views on demand in real time right from your hand held device regardless of your location. Receive alerts and reports when certain conditions are broken or met.
- ✦ **Implement controls** at the point of data entry to avoid errors and maintain limits etc.
- ✦ **Increase accountability** by tagging every record with its creator's name, time, etc.
- ✦ **Remove the need** for purchase and maintenance of expensive computer equipment by leveraging the increasing power and falling costs of mobile devices. Your personnel can use their own or company supplied regular smart phones. You remain compatible with all versions of iOS, Android or Web browser.
- ✦ Your customized application has **advanced security features** found in expensive software including
  - Full GDPR compliance
  - Endpoint data encryption
  - Industry standard User authentication
- ✦ Your customized application has **features found in advanced software** including
  - Real time Geo-location of field assets and personnel
  - Advanced reporting including phone notification and email reports.
  - Data capture including regular forms, bar code scanning, NFC tag reading, Signature capture and photographs all taken from mobile device.
  - GPS functions for map locations etc.



## Advanced features

Your customized solutions can now have the capabilities found in commercial applications giving you powerful control and ease of use. You can now better manage in-premise or field operations with the following features:

### Field or distributed operation management

- Geo locate job tasks, personnel, deployed materials and other resources.
- Receive, assign, dispatch and monitor work orders to field personnel.
- Track individual job status, related resources, time performance etc.
- On the spot onsite reporting and data capture.
- Approve and authorize work processes and resource allocations.
- Review daily inventories and resource allocations
- Review and generate real-time reports of field operations
- Organize and track your projects by distinct job tasks
- Track individual job tasks by workers assigned, resources allocated, timelines, job status etc.

### Planning and project management and controls

- Streamline your project and operation planning by defining targets, limits, timelines etc.
- Helps constrain your operation processes to a preset bounds enforced by controls e.g. system of approvals, limits and quotas, authorizations etc.

### Dynamic and paperless information management

- Eliminate multiple instances of the same data by connecting everyone to the same data source.
- Eliminate paper records which are expensive, difficult to secure, time consuming and prone to tampering or error.
- Track sources of data creating data accountability and security.
- Real time access to data without the need for physical access to office records etc.
- On demand review, approval and authorization of work processes and resource allocations from handheld devices.
- Better data access and security management.
- Review and generate real-time reports of field operations
- Use inbuilt dashboards for quick reference on device or generate detailed customized reports on all your operational metrics right from your hand-held device.
- Use advanced business analytics like Microsoft BI for real time rich reports instantly available to authorized personnel.
- Simplified, automated and accurate generation of reports e.g. delivery notes, requisitions etc.

# Our Application Features



## Hybrid Cloud-Enabled

- Offline Accessibility
- Two Way Syncing



## Automated Workflow

- Actions
- Reports
- Notifications



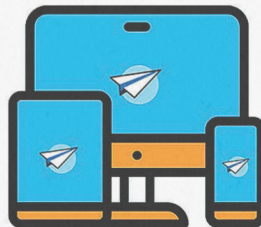
## UI/UX Customization

- Colors, Icons, Images
- Multiple Views of Data

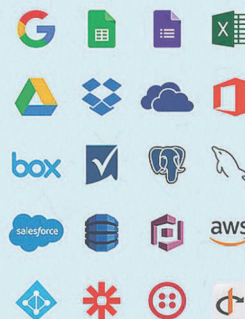


## Multi-platform Support

- Phone
- Tablet
- Web App



## Data Integration



## Data Visualization

- Maps
- Charts
- Calendar
- Gallery
- Dashboard
- Table



## Data Capture

- Text
- Signature
- Yes/No
- Images
- Barcode
- GPS



## Multi-Platform Support

Capture data seamlessly from in premise workstations or field locations using regular mobile devices and take away the need to purchase and maintain expensive computer equipment.

View all data from your desktop or mobile device in rich dashboards filled with charts, calendars, maps, tables, galleries etc. All applications function seamlessly with the latest iOS and Android updates. Never worry again about updating your app to the latest iOS and Android versions.





## Data Integration

Use Dropbox, SQL, or other leading data providers as your primary data source.

You can also work with multiple sources of data to simplify your data input, management, and reporting processes.

Explicit data rules can be used to control what data each user can access.

*Whatever the case you retain absolute custody of your data by having it stored on premise or in your personal or company cloud storage service. All data can be accessed without the app service, and can in fact be instantly be withdrawn from the application and all its users if necessary . A daily backup of the data file is available if desired.*

Data can be maintained in the regular database formats or in ready to use spreadsheet Excel, Gsheet format, and linked to your existing ERP or other management software.

## Data Security and Integrity

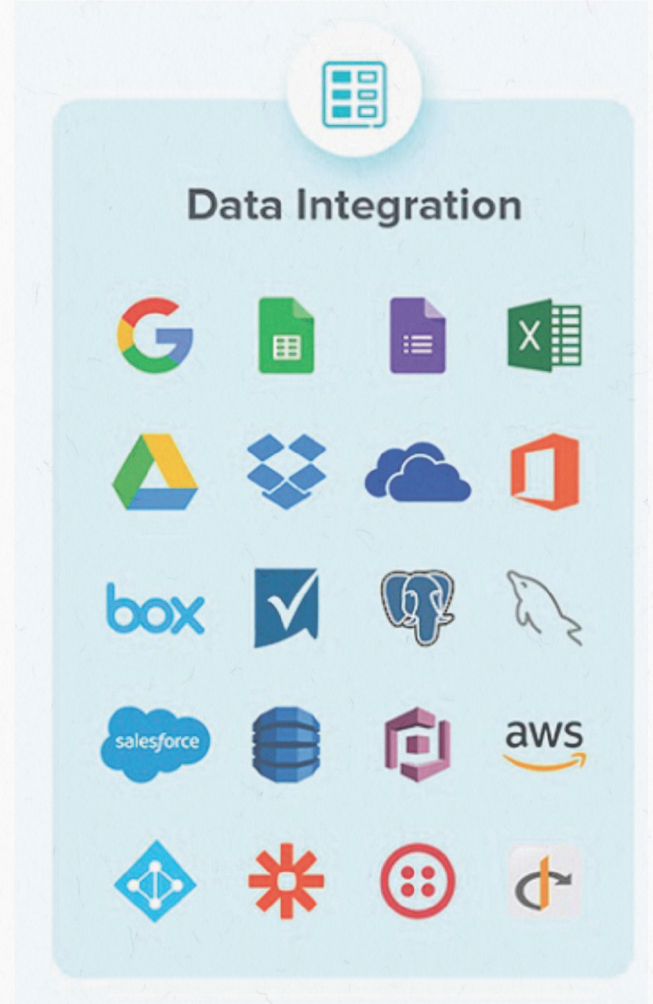
No more guesswork on the security and integrity of your customized solution.

Through our host platform, all our applications conform to industry required privacy and security standards.

User authentication and access is managed through the **Google Cloud Platform**, a suite of cloud computing services that runs on the same infrastructure that Google uses internally for its end-user products. App users can also be authenticated by Microsoft, Apple, Office 365, Smartsheet, Salesforce, Box and Dropbox authentication services. Customized authentication via OpenID providers is also possible.

In addition there is full GDPR compliance and endpoint data encryption for communication between devices.

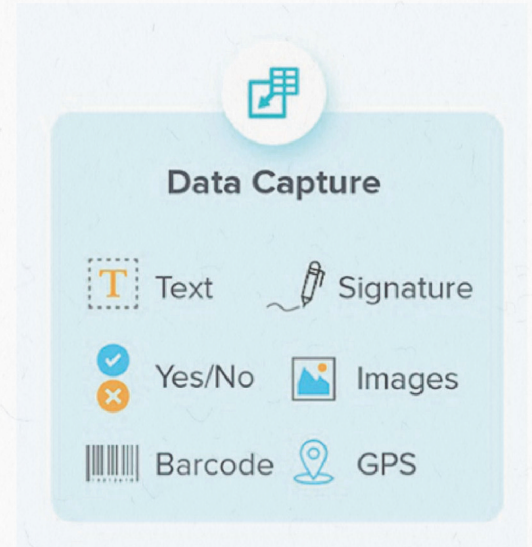
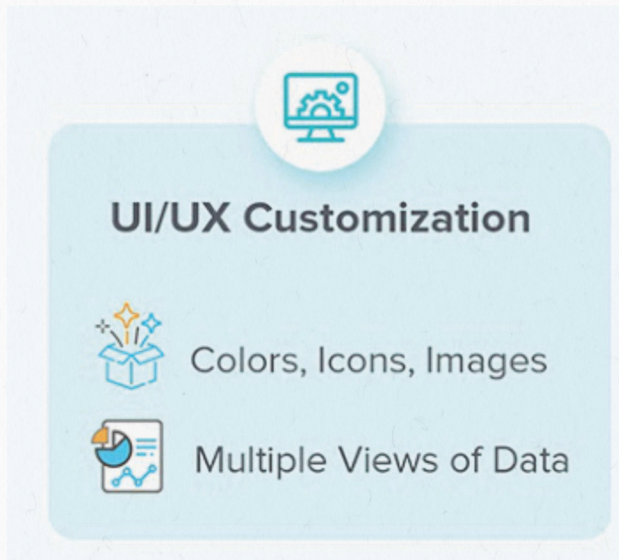
Full details on the security infrastructure employed is available on request.



## Data Capture

Capture all transactions, field data, work processes etc on the go through forms, bar codes, OCR, QR codes, signatures, camera, GPS etc. Data accountability can be maintained by storing every new record with its creator's ID.

Since data from all users is captured, analyzed and posted in real time, Management decisions have the benefit of accurate fresh data on demand free of errors and omissions. Streamline and standardize your office and field data collection processes by integrating all form and data capture into one application.



## User Experience

Our applications simplify form capture by utilizing Intelligence to auto-fill, pre-fill and color code all inputs. This speeds up data entry and eliminates errors. Visual cues also help in quick and easy identification of data.

Dashboards and various other views make it easy and comfortable to review data from your desktop or mobile device.

You can also customize your user experience with powerful actions to easily make data changes, navigate your app, send external messages and create workflow rules. Workflow rules automate processes and reporting based on key app triggers or preset conditions.



## Data Visualization

View all data from your desktop or mobile device in rich dashboards filled with charts, timelines, maps, tables, galleries etc.

You can also generate custom reports, invoices, contracts etc. on demand or by schedule and have them emailed to specified recipients.

All reports can be formatted to match your existing documents in look and feel.

## Automated Workflow

Single click Actions are used to trigger actions simplifying approvals, notifications etc. They appear as easy to identify buttons whenever they are needed. Urgent notification or reminders can be sent to the recipients' device either on demand or automatically.

